



DEPARTMENT OF ARTS AND EDUCATION

COURSE OUTLINE – WINTER SEMESTER 2013

SO 1000 (B3) – Introductory Sociology 3 (3-0-0) UT 45 Hrs.

INSTRUCTOR: René R. Gadacz, Ph.D **PHONE:** 780.539.2831
OFFICE: C-216 **E-MAIL:** rgadacz@gprc.ab.ca

OFFICE HOURS: Daily; by appointment; drop-ins welcome

PREREQUISITE(S)/COREQUISITE(S): none

REQUIRED TEXT(S)/RESOURCE MATERIALS: John Steckley & Guy Letts, 2010 (2nd ed.), Elements of Sociology: A Critical Canadian Introduction. Oxford: Don Mills.

CALENDAR DESCRIPTION: This course examines the theory, methods, and substance of sociology. How societies and individuals are shaped and modified by culture, socialization, deviance, stratification, group processes, industrialization, and social movements will be covered.

CREDIT/CONTACT HOURS: 3 (3-0-0) UT 45 hours

DELIVERY MODE(S): lectures, class discussion, group work, class presentations, written tests, written projects

OUTCOMES: students will be able to identify essential sociological concepts and their historical foundation, understand the relation between individual behavior and society, appreciate the 'sociological imagination', understand the theories and methodologies of sociology as a social science (the research process).

SIDE EFFECTS: Dizziness, rash, itching, trouble breathing. Changes in vision and fainting may occur, including unusual fatigue. Seek medical attention if other side effects occur. Limit alcohol intake.

TRANSFERABILITY: Grade of D or D+ may not be acceptable for transfer to other post-secondary institutions. Transfers to: U of A, UC, AU, UL, AF, CU, CUC, KUC.

STATEMENT ON PLAGIARISM AND CHEATING:

Please refer to the College Policy on Student Misconduct: Plagiarism and Cheating at – www.gprc.ab.ca/about/administration/policies/

GRADING CRITERIA:

GRANDE PRAIRIE REGIONAL COLLEGE			
GRADING CONVERSION CHART			
Alpha Grade	4-point Equivalent	Percentage Guidelines	Designation
A ⁺	4.0	95 – 100	EXCELLENT
A	4.0	85 – 94	
A ⁻	3.7	80 – 84	FIRST CLASS STANDING
B ⁺	3.3	76 – 79	
B	3.0	73 – 75	GOOD
B ⁻	2.7	70 – 72	
C ⁺	2.3	67 – 69	SATISFACTORY
C	2.0	63 – 66	
C ⁻	1.7	60 – 62	
D ⁺	1.3	55 – 59	MINIMAL PASS
D	1.0	50 – 54	
F	0.0	0 – 49	FAIL
WF	0.0	0	FAIL, withdrawal after the deadline

EVALUATIONS:

- Term Test #1 (20 points)..... February 6th
- Term Test #2 (20 points)..... March 13th
- Term Test #3 (20 points)..... April 15th
- Check-Up-From-the-Neck-Up Pop Quiz (10 points).. **anytime**
- Daily Group Current Events Presentations (1 x 10)... **starts** January 14th
- Assignments (3 x 20 points = 60 points)..... TBA

[Total points are 140; your total points will be converted to a percent (%) grade to determine your letter grade. For example, 110/140 = 78/100 = 78% = B+]

STUDENT RESPONSIBILITIES:

Tests/Pop Quiz (70 points) may consist of multiple choice questions, true-and-false, and/or glossary terms/concepts -- based on all lecture and text materials. **Note that there is no final exam.** Details on the **assignments (60 points)** will be discussed early in the semester. Assignment dates will be announced. Attendance at lectures is strongly advised; the same applies to your active participation during class.

PLEASE NOTE:

☛ A missed exam unfortunately cannot be accommodated - *unless* the situation is an unexpected personal or family emergency. **No make-up exams unless it's an emergency.**

What the course assignment(s) and current events/media presentations entails (total 70 points of your course grade) will be discussed in detail as classes get underway and as the course progresses. *You will be provided with instructions and relevant information with plenty of lead time. Details and due dates will be announced in class and on Moodle.*

Plagiarism detection software may be used in this course, and students may be required, individually or collectively, to submit key assignments/components in electronic form.

It is your responsibility to ensure that all your work is at a level appropriate to your year in college/university studies. Always spell- and grammar-check your work; always keep a hard copy or disk copy of your work as back-up. There is writing help on campus, and if in doubt you are always welcome to ask me, your instructor, for clarification. Poor spelling, grammar and organization always interferes with the clear communication of ideas and you *will* lose marks if your over-all communication is ineffective.

Attendance at lectures is strongly encouraged; the same applies to your participation in class discussions. ***Be an active participant in your education!***

Late assignments (or any applicable assignment/course components) will result in an automatic loss of 5 points (of the value of the work) PER DAY, up to and including the day of a late submission, unless immediate or prior arrangements, based on exceptional circumstances, have been made. Documented personal or family emergencies, of course, will be accommodated.

COURSE SCHEDULE/TENTATIVE TIMELINE: *Please note the changing chapter sequence as we go along, which is different from the textbook! Note also that the tests are not cumulative, and we will finalize which chapters are on each test as we go along.*

Week of (Winter 2013):

January 9 – Outlines; course requirements, brief organizational meeting...

January 14, 16 – Steckley, et. al, Chapter 1: Introduction to an analytical model for the study of society; Theories in sociology and in the social sciences

January 21, 23 – Steckley, et. al, Chapter 1 cont'd; Chapter 2: Research methods

January 28, 30 – Steckley, et. al, Chapter 3: Culture; Chapter 4: Socialization

February 4, 6 – Steckley, et. al, Chapter 4: Socialization; Chapter 5: Roles, Interactions
TERM TEST #1 ON WEDNESDAY the 6th!

February 11, 13 – Steckley, et. al, Chapter 5: Roles, Interactions; Chapter 6: Deviance

February 18, 20 – **Family Day and Reading Break February 18-22; no classes!**

February 25, 27 – Steckley, et. al., Chapter 6: Deviance, cont'd; Chapter 13: Gender and Sexuality

March 4, 6 – Steckley, et. al., Chapter 13: Gender, cont'd; Chapter 7: The Family

March 11, 13 – Steckley, et. al, Chapter 7: The Family, cont'd; Chapter 11: Inequality and Stratification

TERM TEST #2 ON WEDNESDAY the 13th

March 18, 20 – Steckley, et. al, Chapter 11: Inequality, cont'd; Chapter 12: Race and Ethnicity

March 25, 27 – Steckley, et. al, Chapter 12: Race and Ethnicity, cont'd; Chapter 9: Education

April 1, 3 – Steckley, et. al., Chapter 9: Education, cont'd; Chapter 14: Social Change

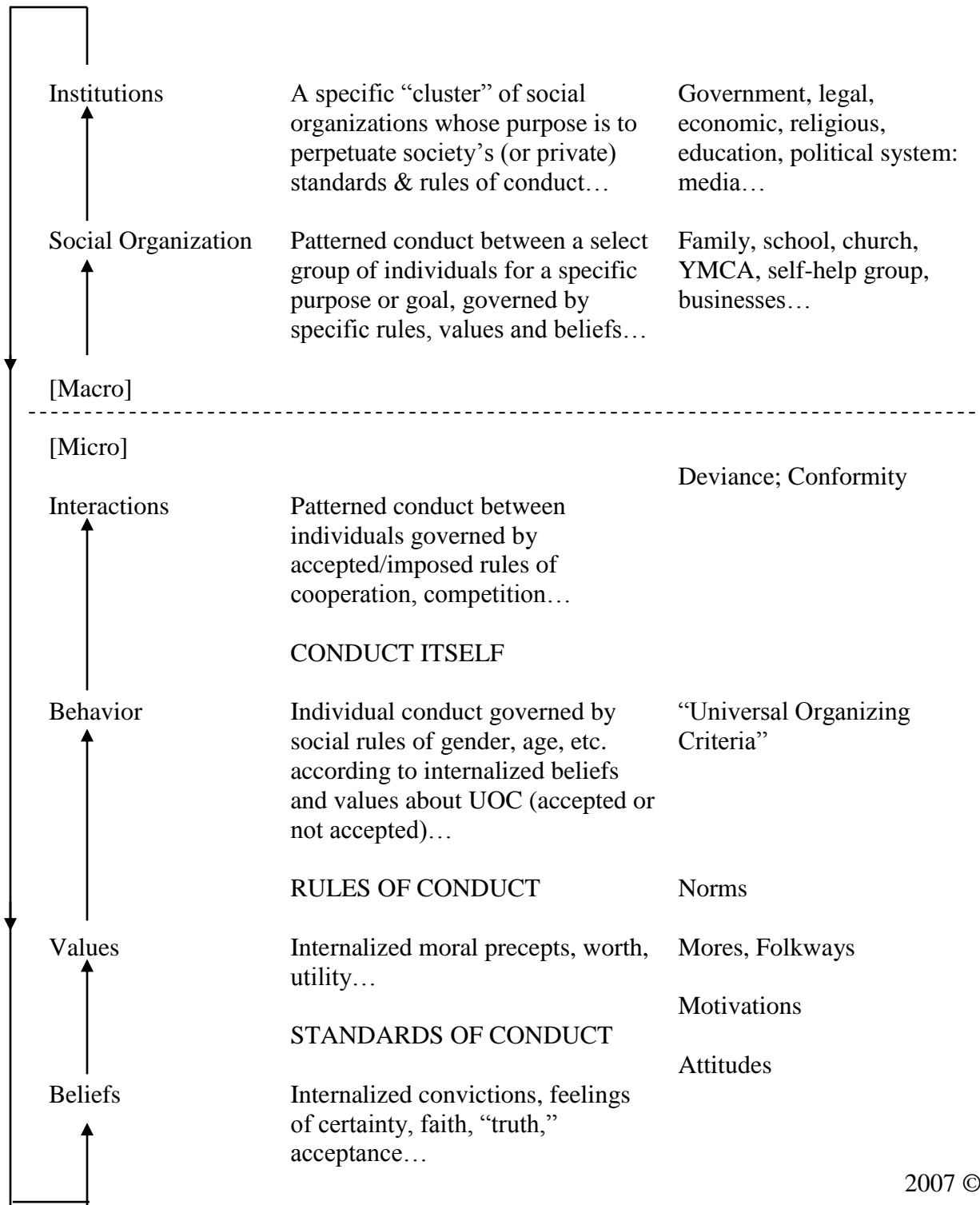
April 8, 10 – Steckley, et. al., Chapter 14: Social Change, cont'd; wrap-up!

April 15 – **TERM TEST #3 on MONDAY the 15th**

[Classes end Tuesday, April 16, 2013]

GENERAL SCHEME OF SOCIETY

“The Social System”



2007 © R. Gadacz

Six Ways To Make This Course More Valuable:

- 1. Participate, to engage your learning**
- 2. Question, to enhance your learning**
- 3. Read, to expand your learning**
- 4. Reflect, to measure your learning**
- 5. Apply, to transfer your learning**
- 6. Innovate, to adapt your learning**