



**DEPARTMENT OF ARTS AND EDUCATION**

**COURSE OUTLINE – WINTER SEMESTER 2015**

**SO 1000 (N3) – Introductory Sociology 3 (3-0-0) UT 45 Hrs.**

**INSTRUCTOR:** René R. Gadacz, Ph.D   **PHONE:** 780.539.2831  
**OFFICE:** C-306                           **E-MAIL:** rgadacz@gprc.ab.ca

**OFFICE HOURS:** Daily; by appointment; drop-ins welcome

**PREREQUISITE(S)/COREQUISITE(S):** none

**REQUIRED TEXT(S)/RESOURCE MATERIALS:** Pearson Custom Sociology: Introduction to Sociology SO 1000 Fall 2014/Winter 2015. Pearson Canada Inc: Boston, MA.

**CALENDAR DESCRIPTION:** This course examines the theory, methods, and substance of sociology. How societies and individuals are shaped and modified by culture, socialization, deviance, stratification, group processes, industrialization, and social movements will be covered.

**CREDIT/CONTACT HOURS:** 3 (3-0-0) UT 45 hours

**DELIVERY MODE(S):** lectures, class discussion, group work, class presentations, written tests, written projects

**COURSE OBJECTIVES:** students will be introduced to the essential sociological concepts and their historical foundation; learn to understand the reciprocal relation between individual behavior and society; to appreciate the 'sociological imagination' view-point; and be taught to apply the theories and methodologies of sociology as a social science in their everyday lives.

**LEARNING OUTCOMES:** when faced with personal events/experiences in their private and working lives, or when exposed to current events in society, students will be able to: identify social-historical forces and patterns at work; see the extent to which their experiences are shared by others; to initiate, participate in, or resist the exercise of power; and be able to distinguish between the latent and manifest consequences of decisions and social actions taken by themselves or by others.

**TRANSFERABILITY: Grade** of D or D+ may not be acceptable for transfer to other post-secondary institutions. Transfers to: UA, UC, AU, UL, AF, CU, CUC, GMU, KUC

**STATEMENT ON PLAGIARISM AND CHEATING:**

Please refer to the College Policy on Student Misconduct: Plagiarism and Cheating at – [www.gprc.ab.ca/about/administration/policies/](http://www.gprc.ab.ca/about/administration/policies/)

**GRADING CRITERIA:**

GRANDE PRAIRIE REGIONAL COLLEGE			
GRADING CONVERSION CHART			
Alpha Grade	4-point Equivalent	Percentage Guidelines	Designation
A <sup>+</sup>	4.0	95 – 100	EXCELLENT
A	4.0	85 – 94	
A <sup>-</sup>	3.7	80 – 84	FIRST CLASS STANDING
B <sup>+</sup>	3.3	76 – 79	
B	3.0	73 – 75	GOOD
B <sup>-</sup>	2.7	70 – 72	
C <sup>+</sup>	2.3	67 – 69	SATISFACTORY
C	2.0	63 – 66	
C <sup>-</sup>	1.7	60 – 62	
D <sup>+</sup>	1.3	55 – 59	MINIMAL PASS
D	1.0	50 – 54	
F	0.0	0 – 49	FAIL
WF	0.0	0	FAIL, withdrawal after the deadline

**EVALUATIONS:**

- Mid-Term Exam (30%)..... January 27
- Final Exam (30%)..... February 26
- Daily News-You-Can-Use Analysis (1 x 10%) ..... **starts** January 8
- ‘Seeing Sociology in *Your* Everyday Life’ Chapter Q’s (1 x 10%)... **starts** Jan. 8
- Assignment – Film Analysis (1 x 20%)..... **due** February 3

## **STUDENT RESPONSIBILITIES:**

The *Mid-Term Exam* (January 27 2015) will consist of multiple-choice questions and short answers, as will the *Final Exam* on the last day of classes (February 26 2015).

## **ATTENDANCE AND EXAM POLICIES:**

Attendance at lectures is strongly encouraged, as is your participation in class discussions. In addition –

1. More than **3** absences (without medical proof or other *legitimate* documentation, etc.) could result in being barred from writing the final exam
2. All exams, averaged (where applicable), must have a passing mark to obtain a passing grade in the course; otherwise, the final mark shall be 'F'

## **PLEASE NOTE:**

☛ A missed exam cannot be accommodated *unless* the situation is an unexpected personal or family emergency. No make-up exams unless it's an emergency that can be documented.

What the semester course work entails will be discussed on the first day of classes. **Students will work with a partner for the News-You-Can-Use analysis and the 'Seeing Sociology in Your Everyday Life' chapter question.** In the event of odd numbers, one person will volunteer to work alone for either a current events analysis or a chapter question, then another person will volunteer to take a turn doing the same. **In regards to the Assignment, students have the option of working alone or working with one other partner (they will share the mark for the assignment).**

Late assignments (or any applicable assignment/course components) will result in an automatic deduction of 5% PER DAY, up to and including the day of a late submission, unless arrangements, based on extenuating circumstances, have been made. Documented personal or family emergencies, of course, will be accommodated. Example: if an assignment is worth 20%, one late day makes it worth 15%, etc.

## **COURSE SCHEDULE/TENTATIVE TIMELINE:**

### **Week of (Winter 2015):**

January 6, 8 - Outlines; course requirements; *Pearson Custom Text*, Chapter 1: Introduction to an analytical model for the study of society and the sociological perspective; Chapter 2: research methodology in sociology and the social sciences

January **13, 15** – Chapter 3: culture, ‘the ‘content’ of society; Chapter 4: society, ‘the framework’ for our behaviors and actions **CURRENT EVENTS/CHAPTER Q’S BEGIN**

January 20, 22 – Chapter 5: socialization, ‘learning’ our behaviors and actions; Chapter 6: deviance, ‘alternative’ behaviors and actions?

January **27, 29** – Chapter 7: groups and organizations, ‘social organization as soft technology’; Chapter 8: family, society’s ‘primary organization’ **MID-TERM EXAM**

February **3, 5** – Chapter 9: social stratification, inequality, class structure, and different opportunities; Chapter 10: race and ethnicity, fundamental human differences, and human rights **ASSIGNMENT – FILM ANALYSIS - DUE**

February 10, 12 – Chapter 11: social change, societies in transition

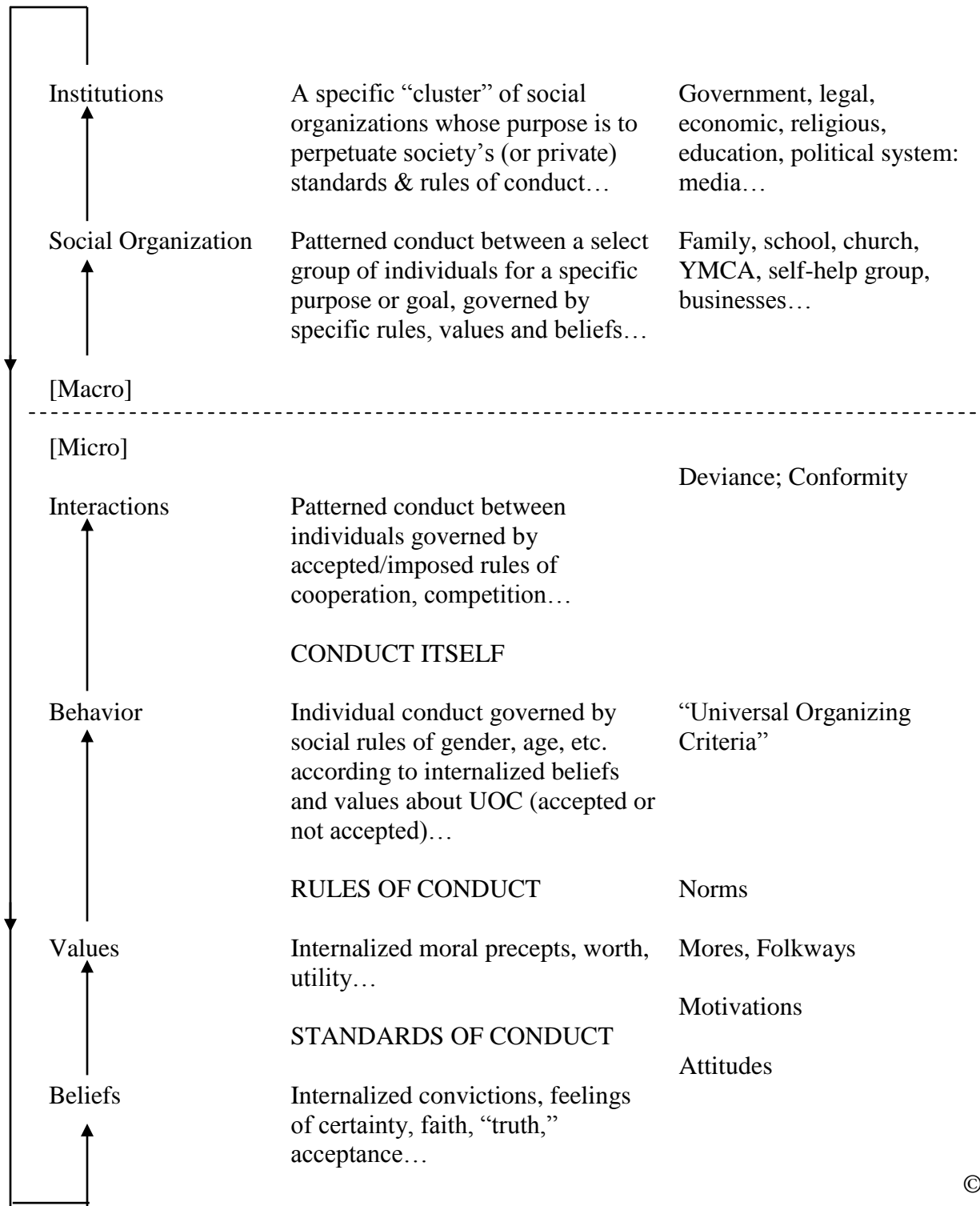
February **17, 19** – **Family Day and Reading Break February 16-20; no classes**

February 24, **26** – Catch-up; review; **FINAL EXAM** on Thursday February 26th

[Classes for this course ends Thursday, February 26, 2015]

# GENERAL SCHEME OF SOCIETY

## “The Social System”



© R. Gadacz

***Six Ways To Make This Course More Valuable:***

- 1. Participate, to engage your learning**
- 2. Question, to enhance your learning**
- 3. Read, to expand your learning**
- 4. Reflect, to measure your learning**
- 5. Apply, to transfer your learning**
- 6. Innovate, to adapt your learning**