



DEPARTMENT OF ARTS AND EDUCATION

COURSE OUTLINE – FALL 2017

SO1000 (C2): Introductory Sociology - 3 (3-0-0) 45 Hours for 15 Weeks

INSTRUCTOR: René R. Gadacz-Gould, Ph.D **PHONE:** 780.539.2831
OFFICE: C-306 **E-MAIL:** rgadacz@gprc.ab.ca

OFFICE HOURS: Daily; by appointment; drop-ins especially welcome

CALENDAR DESCRIPTION: This course examines the theory, methods, and substance of sociology. How societies and individuals are shaped and modified by culture, socialization, deviance, stratification, group processes, industrialization, and social movements will be covered.

PREREQUISITE(S)/COREQUISITE(S): none

REQUIRED TEXT(S)/RESOURCE MATERIALS: Pearson Custom Sociology: Introduction to Sociology SO 1000 [2017 – 2018]. Pearson Canada Inc: Boston, MA.

DELIVERY MODE(S): lectures, class discussion, group work, class presentations, written tests, written projects

COURSE OBJECTIVES: students will be introduced to the essential sociological concepts and their historical foundation; learn to understand the reciprocal relation between individual behavior and society; to appreciate the ‘sociological imagination’ view-point; and be taught to apply the theories and methodologies of sociology as a social science in their everyday lives.

LEARNING OUTCOMES: when faced with personal events/experiences in their private and working lives, or when exposed to current events in society, students will be able to: identify social-historical forces and patterns at work; see the extent to which their experiences are shared by others; to initiate, participate in, or resist the exercise of power; and be able to distinguish between the latent and manifest consequences of decisions and social actions taken by themselves or by others.

TRANSFERABILITY: U of A, UC, AU, UL, AF, CU, CUC, KUC.

Grade of D or D+ may not be acceptable for transfer to other post-secondary institutions.

EVALUATIONS:

Mid-Term Exam (20%).....	October 20
Final Exam (30%).....	TBA
Daily 'News-You-Can-Use' Analysis (1 x 10%).....	starts September 15
Assignment #1 (20%).....	TBD (Sept. – Oct.)
Assignment #2 (20%).....	TBD (Oct. – Nov.)

The *Mid-Term Exam* (October 20) will consist of multiple-choice questions, as will the *Final Exam* (date TBA).

GRADING CRITERIA:

Please note that most universities will not accept your course for transfer credit **IF** your grade is **less than C-**.

GRANDE PRAIRIE REGIONAL COLLEGE			
GRADING CONVERSION CHART			
Alpha Grade	4-point Equivalent	Percentage Guidelines	Designation
A ⁺	4.0	91 – 100	EXCELLENT
A	4.0	86 – 90	
A ⁻	3.7	81 – 85	FIRST CLASS STANDING
B ⁺	3.3	76 – 80	
B	3.0	73 – 75	GOOD
B ⁻	2.7	70 – 72	
C ⁺	2.3	67 – 69	SATISFACTORY
C	2.0	63 – 66	
C ⁻	1.7	60 – 62	
D ⁺	1.3	55 – 59	MINIMAL PASS
D	1.0	50 – 54	
F	0.0	0 – 49	FAIL
WF	0.0	0	FAIL, withdrawal after the deadline

COURSE SCHEDULE/TENTATIVE TIMELINE

Week of (Fall 2017): *Note: all Chapter numbers refer to the Pearson Custom Text (SO 1000, 2017-2018) compiled for use in this course.*

September 1 – Outlines; course requirements; brief organizational meeting

September 4, 8 – *Custom Text*, Chapter 1: Introduction to an analytical model for the study of society & the sociological perspective **Labor Day the 4th – no classes**

September 11, 15 – Chapter 1, continued; Chapter 2: research methodology in sociology and the social sciences

September 18, 22 – Chapter 2, continued; Chapter 3: culture, the ‘content’ of society

September 25, 29 – Chapter 3, continued; Chapter 4: society, the ‘framework’ for our behaviors and actions

October 2, 6 – Chapter 4, continued; Chapter 5: socialization, ‘learning’ our behaviors and actions

October 9, 13 – Chapter 5: socialization, continued

Monday the 9th – Thanksgiving, no classes

October 16, 20 – Chapter 6: deviance; **Mid-Term Exam Friday the 20th**

October 23, 27 – Chapter 6, continued

October 30, November 3 – Chapter 7: groups and organizations, ‘social organization as soft technology’

November 6, 10 – Chapter 7, continued; Chapter 8: family, society’s ‘primary organization’ **Fall Break, November 10 & 13, no classes**

November 13, 17 – Chapter 8, continued **again, Monday the 13th, no class**

November 20, 24 – Chapter 9: social stratification, inequality, class structure, and different opportunities; Chapter 10, social class in Canada

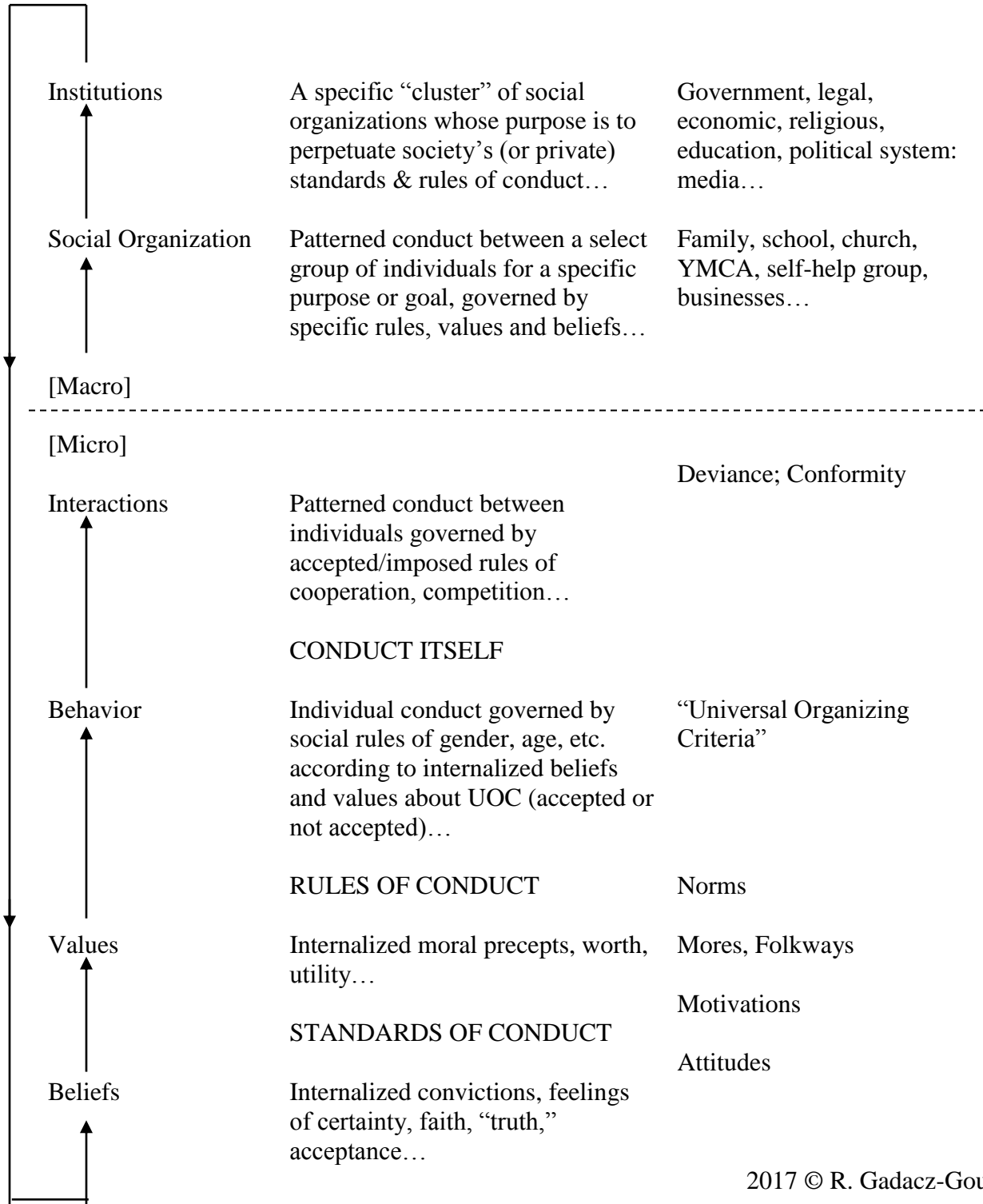
November 27, December 1 – Chapter 10, continued; Chapter 11: race & ethnicity

December 4 – Chapter 11, continued; Chapter 12: social change, society in transition

[Classes end Thursday, December 7, 2017; Final Exams December 9-19, 2017]

GENERAL SCHEME OF SOCIETY

“The Social System”



2017 © R. Gadacz-Gould

Six Ways To Make This Course More Valuable:

- 1. Participate, to engage your learning**
- 2. Question, to enhance your learning**
- 3. Read, to expand your learning**
- 4. Reflect, to measure your learning**
- 5. Apply, to transfer your learning**
- 6. Innovate, to adapt your learning**

STUDENT RESPONSIBILITIES:

(1) Exams consist of multiple choice questions -- based on all lecture and text materials. **(2)** Details on the ***written assignments*** will be discussed early in the semester and deadline dates will be announced when the assignments are given. For these assignments, you have the option of working with a partner, so you will share the marks. **(3)** What the ***'News You Can Use' presentations*** entail will be discussed in detail as classes get underway. *For these presentations, you will work with a class partner and share the marks. Other details and due dates will be announced both in class and on Moodle.*

PLEASE NOTE:

A missed exam unfortunately cannot be accommodated - *unless* the situation is an unexpected personal or family emergency. No make-up exams unless it's an emergency; documentation is then required.

Plagiarism detection software may be used in this course, and students may be required, individually or collectively, to submit key assignments/components in electronic form.

It is your responsibility to ensure that all your work is at a level appropriate to your year in college/university studies. Always spell- and grammar-check your work; always keep a hard copy or disk copy of your work as back-up. There is writing help on campus, and if in doubt you are always welcome to ask me, your instructor, for clarification. Poor spelling, grammar and organization interferes with the clear communication of ideas and you *will* lose marks if your over-all communication is ineffective.

Attendance at lectures is strongly encouraged; the same applies to your participation in class discussions. ***Be an active participant in your education!***

Late assignments or no-shows (on any applicable assignment/course component) will result in an automatic loss of 5 marks (of the value of the work) PER DAY, up to and including the day of a late submission (example: if an assignment is worth 20%, one late day makes it worth 15%, etc.), unless immediate or prior arrangements, based on exceptional circumstances, have been made. Documented personal or family emergencies, of course, will be accommodated.

STATEMENT ON PLAGIARISM AND CHEATING:

Cheating and plagiarism will not be tolerated and there will be penalties. For a more precise definition of plagiarism and its consequences, refer to the Student Conduct section of the College Calendar at <http://www.gprc.ab.ca/programs/calendar/> or the College Policy on Student Misconduct: Plagiarism and Cheating at <https://www.gprc.ab.ca/about/administration/policies>

Instructors reserve the right to use electronic plagiarism detection services on written assignments. **Instructors also reserve the right to ban the use of any form of electronics (cell phones, Blackberries, iPods, tablets, scanning pens, electronic dictionaries, etc.) during class and during exams.**

****Note:** all Academic and Administrative policies are available on the same page.