



DEPARTMENT OF ARTS AND EDUCATION

COURSE OUTLINE – WINTER 2016

SO1000 (A3) Introductory Sociology - 3 (3-0-0) 45 Hours

INSTRUCTOR: René R. Gadacz, Ph.D **PHONE:** 780.539.2831
OFFICE: C-306 **E-MAIL:** rgadacz@gprc.ab.ca

OFFICE HOURS: Daily; by appointment; drop-ins welcome

PREREQUISITE(S)/COREQUISITE(S): none

REQUIRED TEXT(S)/RESOURCE MATERIALS: Pearson Custom Sociology: Introduction to Sociology SO 1000 Winter 2016. Pearson Canada Inc: Boston, MA.

CALENDAR DESCRIPTION: This course examines the theory, methods, and substance of sociology. How societies and individuals are shaped and modified by culture, socialization, deviance, stratification, group processes, industrialization, and social movements will be covered.

CREDIT/CONTACT HOURS: 3 credits / 3 hours per week

DELIVERY MODE(S): lectures, class discussion, group work, class presentations, written tests, written projects

COURSE OBJECTIVES: students will be introduced to the essential sociological concepts and their historical foundation; learn to understand the reciprocal relation between individual behavior and society; to appreciate the 'sociological imagination' view-point; and be taught to apply the theories and methodologies of sociology as a social science in their everyday lives.

LEARNING OUTCOMES: when faced with personal events/experiences in their private and working lives, or when exposed to current events in society, students will be able to: identify social-historical forces and patterns at work; see the extent to which their experiences are shared by others; to initiate, participate in, or resist the exercise of power; and be able to distinguish between the latent and manifest consequences of decisions and social actions taken by themselves or by others.

TRANSFERABILITY: Transfers to: U of A, UC, AU, UL, AF, CU, CUC, KUC
Grade of D or D+ may not be acceptable for transfer to other post-secondary institutions.

GRADING CRITERIA:

GRANDE PRAIRIE REGIONAL COLLEGE			
GRADING CONVERSION CHART			
Alpha Grade	4-point Equivalent	Percentage Guidelines	Designation
A ⁺	4.0	95 – 100	EXCELLENT
A	4.0	85 – 94	
A ⁻	3.7	80 – 84	FIRST CLASS STANDING
B ⁺	3.3	76 – 79	
B	3.0	73 – 75	GOOD
B ⁻	2.7	70 – 72	
C ⁺	2.3	67 – 69	SATISFACTORY
C	2.0	63 – 66	
C ⁻	1.7	60 – 62	
D ⁺	1.3	55 – 59	MINIMAL PASS
D	1.0	50 – 54	
F	0.0	0 – 49	FAIL
WF	0.0	0	FAIL, withdrawal after the deadline

EVALUATIONS:

- Mid-Term Exam (20%)..... February 26
- Final Exam (30%)..... TBA
- Daily ‘News-You-Can-Use’ Analysis (1 x 10%)..... **starts** January 15
- Assignment #1 (20%)..... TBD (February)
- Assignment #2 (20%)..... TBD (March)

STUDENT RESPONSIBILITIES:

The *Mid-Term Exam* (February 26) will consist of multiple-choice questions and possibly short answer questions, as will the *Final Exam* (date TBA). Assignments #1 and #2 will be provided on dates to be announced.

ATTENDANCE AND EXAM POLICIES:

Attendance at lectures is strongly encouraged, as is your participation in class discussions.

PLEASE NOTE:

A missed exam or course component won't be accommodated *unless* the situation is an unexpected personal or family emergency, and unless you can provide documentation.

Late assignments (or any applicable assignment/course component) will result in an automatic deduction of 5% PER DAY, up to and including the day of a late submission, unless arrangements based on extenuating circumstances have been made. Only legitimately documented personal or family emergencies will be accommodated. Example: if an assignment is worth 20%, one late day makes it worth 15%, and so on. Forgetfulness or poor planning won't be accommodated.

What the semester course work entails will be discussed on the first day of classes. **Students will work with a partner for the News-You-Can-Use analysis.**

In regards to the Assignments, students have the option of working alone or working with one other partner (they will share the mark for the assignments).

STATEMENT ON PLAGIARISM AND CHEATING:

Cheating and plagiarism will not be tolerated and there will be penalties. For a more precise definition of plagiarism and its consequences, refer to the Student Conduct section of the College Admission Guide at <http://www.gprc.ab.ca/programs/calendar/>

Or the College Policy on Student Misconduct: Plagiarism and Cheating at <http://www.gprc.ab.ca/about/administration/policies/>

****Note:** all Academic and Administrative policies are available on the same page.

Instructors reserve the right to use electronic plagiarism detection services on written assignments. Instructors also reserve the right to ban the use of any form of electronics (cell phones, Blackberries, iPods, tablets, scanning pens, electronic dictionaries, etc.) during class and during exams.

COURSE SCHEDULE/TENTATIVE TIMELINE - Winter 2016:

January 8 - Outlines; course requirements, brief organizational meeting...

January 11, 15 – *Pearson Custom Text*, Chapter 1: Introduction to an analytical model for the study of society and the sociological perspective **‘News You Can’ Use BEGINS**

January 18, 22 – Chapter 1, continued; Chapter 2: research methodology in sociology and the social sciences

January 25, 29 – Chapter 2, continued; Chapter 3: culture, ‘the ‘content’ of society

February 1, 5 – Chapter 3, continued; Chapter 4: society, ‘the framework’ for our behaviors and actions

February 8, 12 – Chapter 4, continued; Chapter 5: socialization, ‘learning’ our behaviors and actions

February 15, 19 – **Family Day and Reading Break February 15-19; no classes**

February 22, 26 – Chapter 5, continued... **Mid-Term Exam, Friday the 26th**

February 29, March 4 – Chapter 6: deviance, ‘alternative’ behaviors and actions?

March 7, 11 – Chapter 6, continued; Chapter 7: groups and organizations, ‘social organization as soft technology’

March 14, 18 – Chapter 7, continued; Chapter 8: family, society’s ‘primary organization’

March 21, **25** – Chapter 8, continued; Chapter 9: social stratification, inequality, class structure, and differential opportunities **March 25, Good Friday – no class**

March 28, April 1 – Chapter 9, continued; Chapter 10: race and ethnicity, fundamental human differences, and human rights

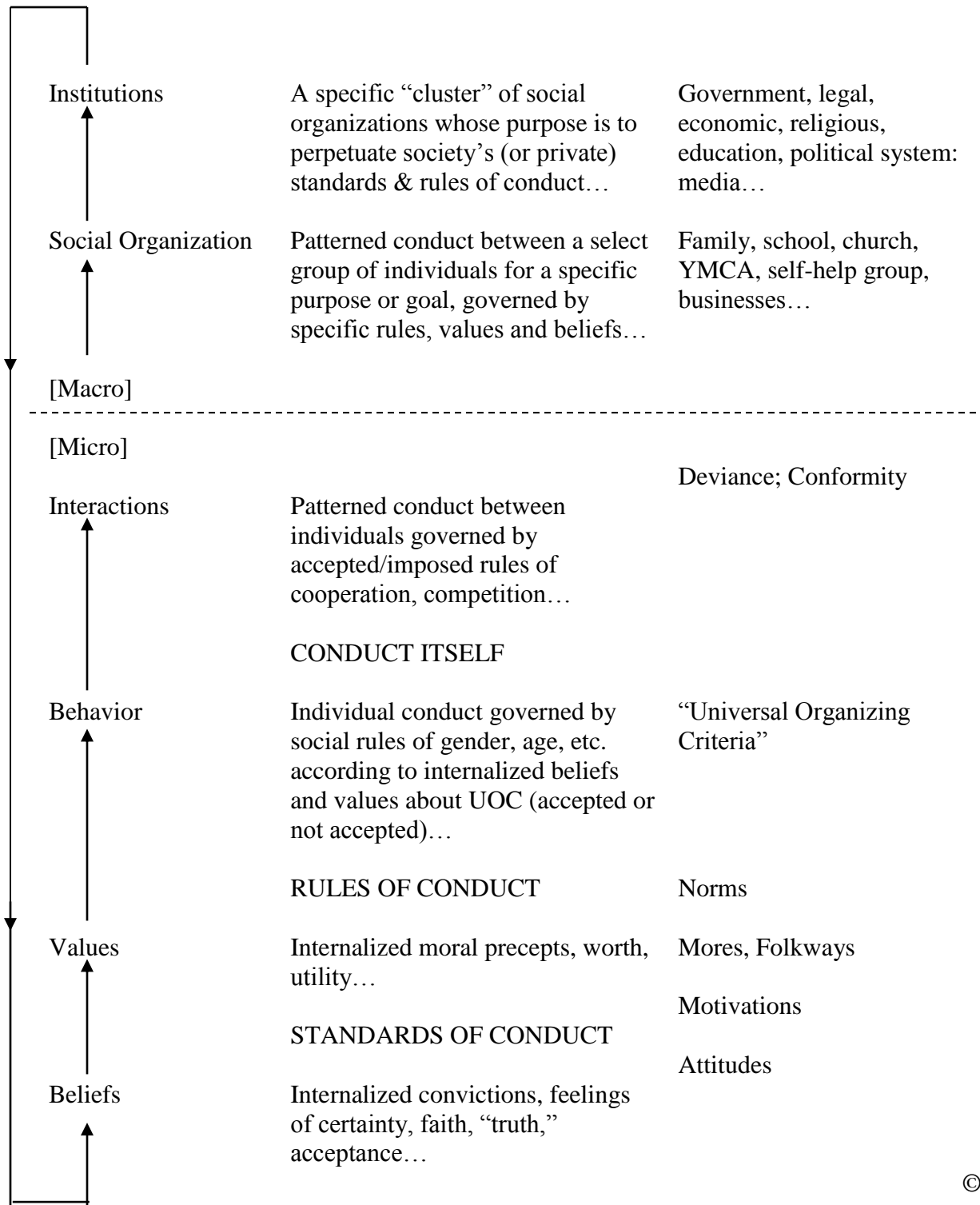
April 4, 8 – Chapter 10, continued, Chapter 11: social change, society in transition

April 11, 13 – catch-up, wrap-up, and review **Final Exam date TBA**

[Classes end Wednesday, April 13, 2016]

GENERAL SCHEME OF SOCIETY

“The Social System”



© R. Gadacz

Six Ways To Make This Course More Valuable:

- 1. Participate, to engage your learning**
- 2. Question, to enhance your learning**
- 3. Read, to expand your learning**
- 4. Reflect, to measure your learning**
- 5. Apply, to transfer your learning**
- 6. Innovate, to adapt your learning**