



**DEPARTMENT OF ARTS AND EDUCATION**

**COURSE OUTLINE – WINTER SEMESTER 2021**

**SO 1000 (A3) – Introductory Sociology 3 (3-0-0) UT 45 Hrs.**

**INSTRUCTOR:** René R. Gadacz-  
Gould, Ph.D

**PHONE:** 780.539.2831

**OFFICE:** C-306

**E-MAIL:** rgadacz-gould@gprc.ab.ca

**OFFICE HOURS:** Remote: Monday thru Friday, 08:30 hrs. to 17:00 hrs.

**PREREQUISITE(S)/COREQUISITE(S):** none

**REQUIRED TEXT(S)/RESOURCE MATERIALS:** Pearson Custom Sociology: Introduction to Sociology SO 1000 [2020]. Pearson Canada: Boston, MA.; J.D. Vance, 2020, Hillbilly Elegy: A Memoir of a Family and Culture in Crisis: Harper Paperbacks.

**WINTER 2021 DELIVERY:** Remote Delivery. This course is delivered remotely. There are no face-to-face or on-site requirements. **Students must have a computer with a webcam and reliable internet connection.** Technological support is available through [helpdesk@gprc.ab.ca](mailto:helpdesk@gprc.ab.ca).

**CALENDAR DESCRIPTION:** This course examines the theory, methods, and substance of sociology. How societies and individuals are shaped and modified by culture, socialization, deviance, stratification, group processes, industrialization, and social movements will be covered.

**CREDIT/CONTACT HOURS:** 3 (3-0-0) UT 45 hours

**DELIVERY MODE(S):** lectures, class discussion, group work, class presentations, written tests, written projects

**COURSE OBJECTIVES:** students will be introduced to the essential sociological concepts and their historical foundation; learn to understand the reciprocal relation between individual behavior and society; to appreciate the ‘sociological imagination’ view-point; and be taught to apply the theories and methodologies of sociology as a social science in their everyday lives.

**LEARNING OUTCOMES:** when faced with personal events/experiences in their private and working lives, or when exposed to current events in society, students will be able to: identify social-historical forces and patterns at work; see the extent to which their experiences are shared by others; to initiate, participate in, or resist the exercise of power; and be able to distinguish between the latent and manifest consequences of decisions and social actions taken by themselves or by others.

**TRANSFERABILITY:**

**\*Warning:** Although we strive to make the transferability information in this document up-to-date and accurate, **the student has the final responsibility for ensuring the transferability of this course to Alberta Colleges and Universities.** Please consult the Alberta Transfer Guide for more information. You may check to ensure the transferability of this course at Alberta Transfer Guide main page <http://www.transferralberta.ca> or, if you do not want to navigate through few links, at <http://alis.alberta.ca/ps/tsp/ta/tbi/onlineSearch.html?SearchMode=S&step=2>

**\*\* Grade of D or D+ may not be acceptable for transfer to other post-secondary institutions. Students are cautioned that it is their responsibility to contact the receiving institutions to ensure transferability**

**STATEMENT ON PLAGIARISM AND CHEATING:**

Please refer to the College Policy on Student Misconduct: Plagiarism and Cheating at – [www.gprc.ab.ca/about/administration/policies/](http://www.gprc.ab.ca/about/administration/policies/)

**GRADING CRITERIA:**

GRANDE PRAIRIE REGIONAL COLLEGE			
GRADING CONVERSION CHART			
Alpha Grade	4-point Equivalent	Percentage Guidelines	Designation
A <sup>+</sup>	4.0	91 – 100	EXCELLENT
A	4.0	86 – 90	
A <sup>-</sup>	3.7	81 – 85	FIRST CLASS STANDING
B <sup>+</sup>	3.3	77 – 80	
B	3.0	73 – 76	GOOD
B <sup>-</sup>	2.7	69 – 72	
C <sup>+</sup>	2.3	66 – 68	SATISFACTORY
C	2.0	63 – 65	
C <sup>-</sup>	1.7	60 – 62	
D <sup>+</sup>	1.3	55 – 59	MINIMAL PASS
D	1.0	50 – 54	
F	0.0	0 – 49	FAIL
WF	0.0	0	FAIL, withdrawal after the deadline

**EVALUATIONS:**

Mid-Term Exam (20%)..... February 22

Final Exam (30%)..... TBA

Daily End-of-Chapter Question (1 x 10%)..... **starts** January 18

Assignment #1 (20%)..... TBD (Jan/Feb)

Assignment #2 (20%)..... TBD (March)

## STUDENT RESPONSIBILITIES:

1. The **Mid-Term Exam** (20%, February 22) will consist of short answer questions/definitions of terminology as will the **Final Exam** (30%, date TBA).
2. The **daily** 'End-of-Chapter Question' is where a group of 2 students will select one question from the section called 'Seeing Sociology in *Your* Everyday Life' or the section 'Making the Grade' at *the back of each chapter* (our 'Intro to Sociology Custom Text') and present their responses at the beginning of each class (approx. 10 minutes, including questions and discussion). *Stay with the chapter we are currently on – there are lots of questions to choose from.* **Hello: Many students present the Question using PowerPoint slides.** You must then submit (by e-mail) your slides or the written response (1-2 pages max) to the question you answered *on the day of your presentation*, and must include your names, date, and course I.D. Please work cooperatively with your presentation partner, as you will be sharing the mark (10%).
3. Details on **Assignments #1** (20%) and **#2** (20%) to be announced in due course. Students have the option of working alone or working with one other partner (they will share the mark for the assignments).

## ATTENDANCE AND EXAM POLICIES:

Attendance at lectures is strongly encouraged, as is your participation in class discussions.

### PLEASE NOTE:

A missed exam or course component won't be accommodated *unless* the situation is an unexpected personal or family emergency (for which you should provide documentation).

Late assignments (or any applicable assignment/course component) will result in an automatic deduction of 5% PER DAY INCLUDING WEEKENDS, up to and including the day of a late submission, unless arrangements based on extenuating circumstances have been made. Only legitimately documented personal or family emergencies will be accommodated. Example: if an assignment is worth 20%, one late day makes it worth 15%, and so on. Forgetfulness or poor planning won't be accommodated.

### **COURSE SCHEDULE/TENTATIVE TIMELINE - Winter 2021**

January 6 – Outlines; course requirements; *Pearson Custom Text*, Chapter 1: Introduction to an analytical model for the study of society and the sociological perspective

January 11, **13** – Chapter 1, continued; Chapter 2: research methodology in sociology and the social sciences   **End-of-Chapter Question *begins* on the 17th**

January 18, 20 – Chapter 2, continued; Chapter 3: culture, ‘the ‘content’ of society

January 25, 27 – Chapter 3, continued; Chapter 4: society, ‘the framework’ for our behaviors and actions; Chapter 5: socialization, ‘learning’ our behaviors and actions

February 1, 3 – Chapter 5, continued; Chapter 6: deviance, ‘alternative’ behaviors and actions?

February 8, 10 – Chapter 6: deviance, cont’d...

February **15, 17** – **Family Day and Reading Break; no classes all this week**

February **22, 24** – **Mid-Term Exam, Monday the 22<sup>nd</sup>**

March 1, 3 – Chapter 6, continued; Chapter 7: groups and organizations, ‘social organization as soft technology’

March 8, 10 – Chapter 7, continued; Chapter 8: family, society’s ‘primary organization’

March 15, 17 – Chapter 8, continued; Chapter 9: social stratification, inequality, class structure, and differential opportunities

March 22, 24 – Chapter 9, continued; Chapter 10: social class in Canada

March 29, 31 – Chapter 10, continued; Chapter 11: race and ethnicity

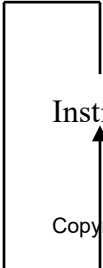
April 5, 7 – Chapter 11, continued; Chapter 12: social change, society in transition

April 12 – Chapter 12, continued; wrap-up!

[Classes end Monday April 12, 2021 – **Final Exam date TBA**]

## GENERAL SCHEME OF SOCIETY

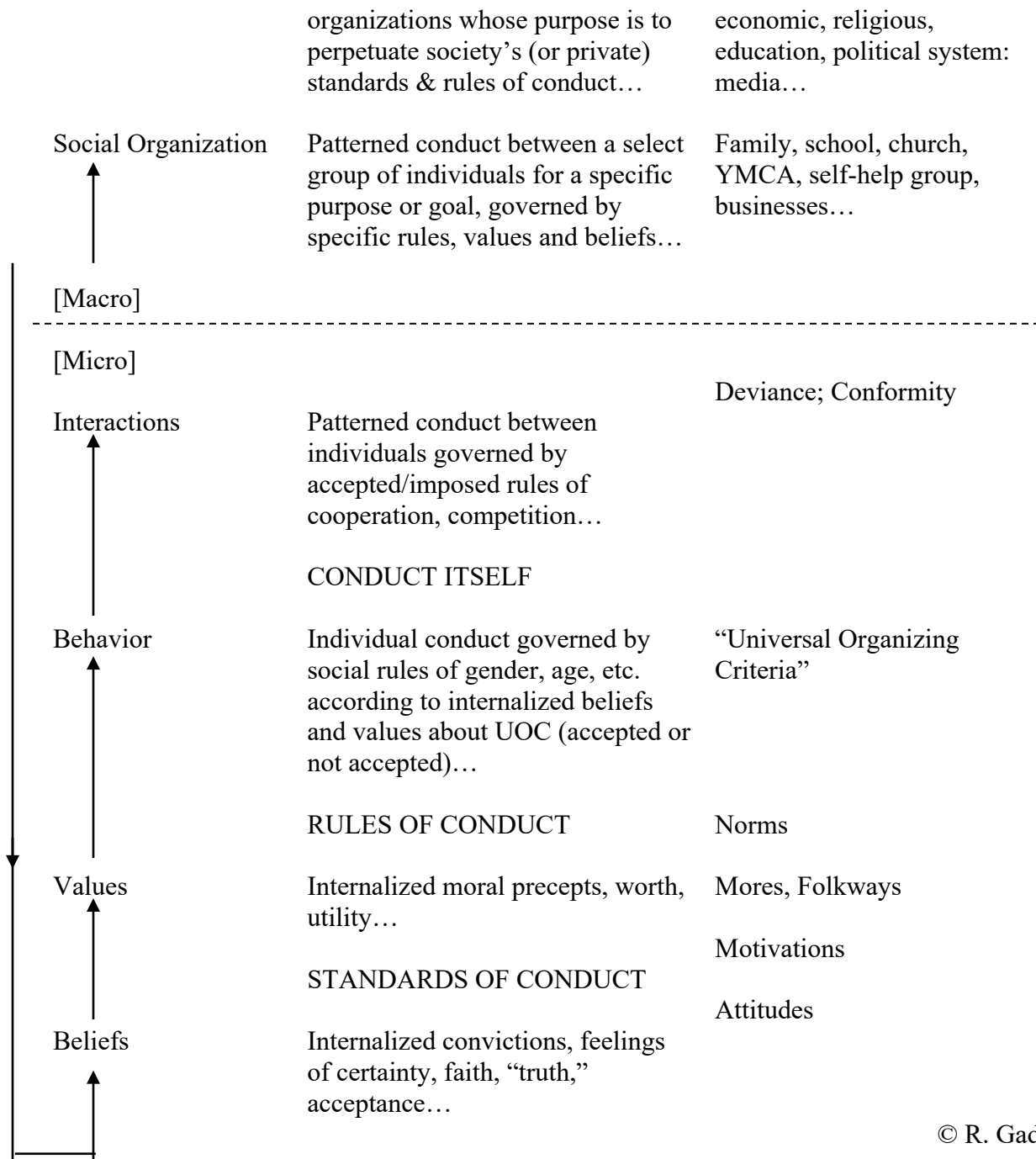
### “The Social System”



Institutions

A specific “cluster” of social

Government, legal,



### ***Six Ways To Make This Course More Valuable:***

- 1. Participate, to engage your learning**
- 2. Question, to enhance your learning**

- 3. Read, to expand your learning**
- 4. Reflect, to measure your learning**
- 5. Apply, to transfer your learning**
- 6. Innovate, to adapt your learning**