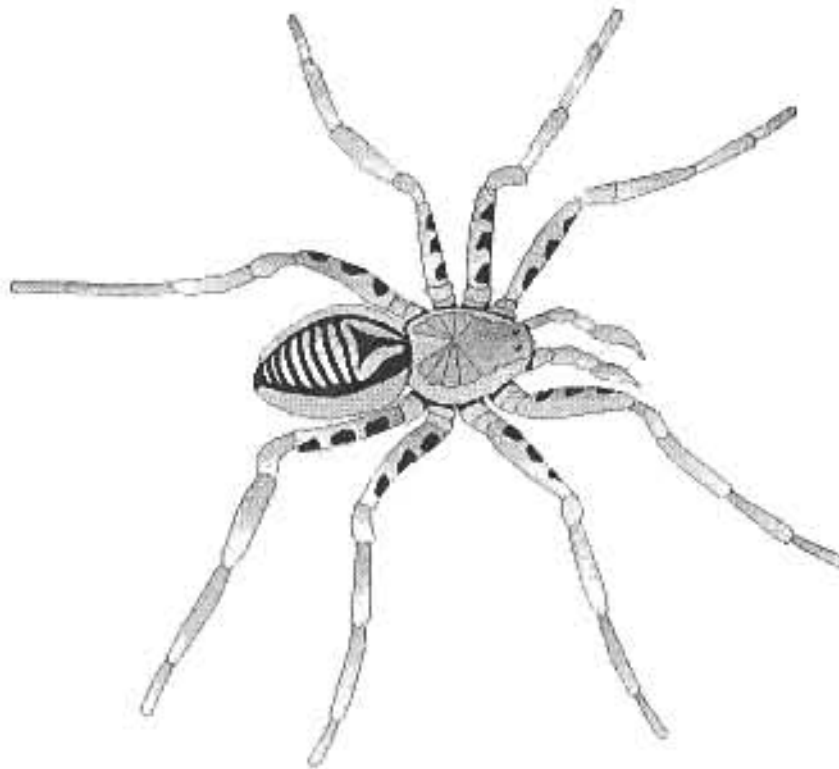


*Dept. of Science & Technology
Grande Prairie Regional College*

**ZO 2500
Survey of the Invertebrates**

Course Outline
W 1997-98



Philip Johnson
Office: J222
Phone: 539 2827

Terry Shewchuk
Office: J221
Phone: 539 2986

ZO 2500 COURSE OUTLINE

SCHEDULE:

Classes - Monday, Wednesday, Friday 1300-1350

Labs. - Thursday 1500-1750

TRANSFERABILITY:

ZO 250 (University of Alberta)

Senior Zoology (University of Calgary)

ZO 3800 (University of Lethbridge)

PREREQUISITE:

BI 1080 or ZO 1200

DESCRIPTION:

Zoology 2500 is a general introduction to the functional anatomy and life-cycles of the major invertebrate taxa. Topics covered will include the classification, functional morphology and life-cycles of the protozoans, poriferans, cnidarians, platyhelminths, pseudo-coelomates, echinoderms, annelids, molluscs and arthropods.

Laboratories are correlated with the lecture material, and procedures will include major dissections and observation of living and preserved demonstration material.

REQUIREMENTS:

Since presences at lectures and laboratories, participation in classroom discussions and projects, and the completion of assignments are important components of this course, students will serve their best interests by regular attendance. Those who chose not to attend must assume whatever risks are involved. In this regard, the attention of students is directed to the Academic Guidelines of Grande Prairie Regional College.

ZO 2500
COURSE OUTLINE

<u>EVALUATION:</u>	Lecture / Lab quizzes	20%
	Mid-term Exam	20%
	Final Lab Exam	30%
	Final Lecture Exam	30%

TEXT-BOOK: **"Invertebrate Zoology"**
R.S.K. Barnes
Saunders Publishing

OTHER RESOURCES: **"The Zoology Colouring Book"**
Elsom
Fitzhenry and Whiteside Limited

"The Invertebrates - A new synthesis"
Barnes, Calow and Olive
Blackwell Scientific Publications

"Living Invertebrates"
Pearse, Pearse, Buchsbaum and Buchsbaum
Blackwell Scientific Publications

**"Beck and Braithwaite's Invertebrate Zoology -
A Laboratory Workbook"**
Wallace *et al*
Macmillan Publishing

ZO 2500
 CLASS & LAB SCHEDULE
 Winter Semester 1997-98

MONDAY	TUESDAY	WEDNESDAY	THURSDAY	FRIDAY
		January 7 Introduction	8 <i>No Lab</i>	9 Protozoa
12 Protozoa	13	14 Protozoa	15 <i>Microscopy</i>	16 Protozoa
19 Protozoa	20	21 Porifera	22 <i>Protozoa</i>	23 Cnidaria
26 Cnidaria	27	28 Platyhelminthes	29 <i>Porifera and Cnidaria</i>	30 Platyhelminthes
February 2 Platyhelminthes	3	4 Platyhelminthes	5 <i>Platyhelminthes</i>	6 Pseudocoelomates
9 Pseudocoelomates	10	11 Pseudocoelomates	12 <i>Pseudocoelomates</i>	13 Pseudocoelomates
16 Family Day	17	18 Pseudocoelomates	19 NO LAB	20 MID-TERM
23	24	25 BREAK	26	27
March 2 Echinoderms	3	4 Echinoderms	5 <i>Echinoderms</i>	6 Echinoderms
9 Echinoderms	10	11 Molluscs	12 <i>Molluscs</i>	13 Molluscs
16 Molluscs	17	18 Molluscs	19 <i>Annelids</i>	20 Annelids
23 Annelids	24	25 Annelids	26 <i>Arthropods I</i>	27 Annelids
30 Arthropods	31	April 1 Arthropods	2 <i>Arthropods II</i>	3 Arthropods
6 Arthropods	7	8 Arthropods	9 LAB EXAM	10 Good Friday
13 Arthropods	14	15 Arthropods		